

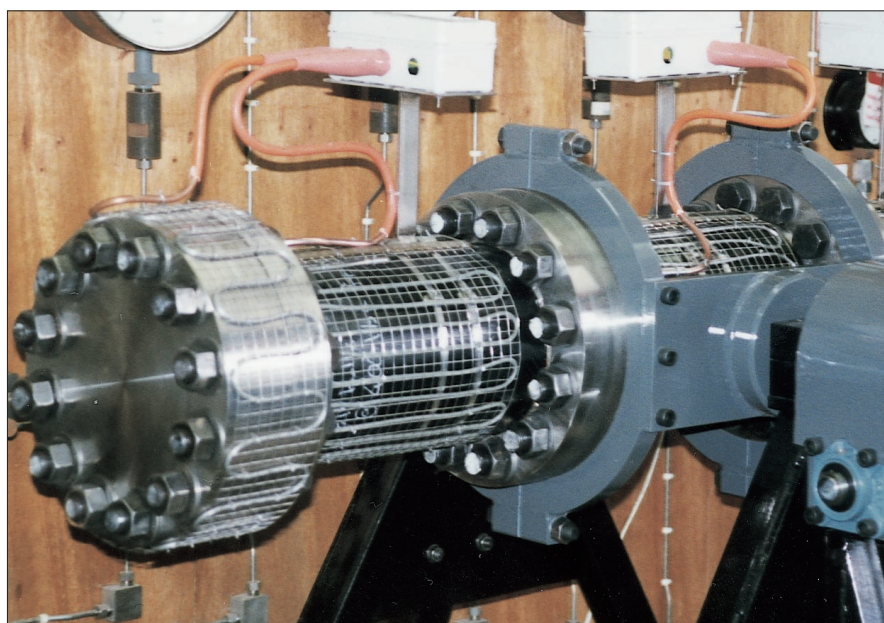
XSS/SC

Stainless Steel Sheathed Mineral Insulated Heating Cables for High Temperature Applications

Cross Stainless Steel sheathed single conductor heating cable provides resistance to most corrosive substances. For applications up to 600°C.



Trace Heating and Insulation of Process Pipework and Pumps



Research and Development Applications

Applications up to 600°C

For surface temperatures over 600°C - 'Give Cross a call'

XSS/SC/10

10 Ohms/metre

XSS/SC/6.3

6.3 Ohms/metre

XSS/SC/4

4 Ohms/metre

XSS/SC/2.5

2.5 Ohms/metre

XSS/SC/1.6

1.6 Ohms/metre

XSS/SC/1.0

1.0 Ohms/metre

XSS/SC/0.63

0.63 Ohms/metre

XSS/SC/0.4

0.4 Ohms/metre

XSS/SC/0.25

0.25 Ohms/metre

XSS/SC/0.16

0.16 Ohms/metre



CROSS ELECTRICAL (NOTTINGHAM) LTD

Trace Works, Debdale Lane, Keyworth, Nottingham, NG12 5HN

Tel: +44 (0)115 937 5121 Fax: +44 (0)115 937 5116

E-mail: heat@cross-electrical.co.uk Website: www.cross-electrical.co.uk

