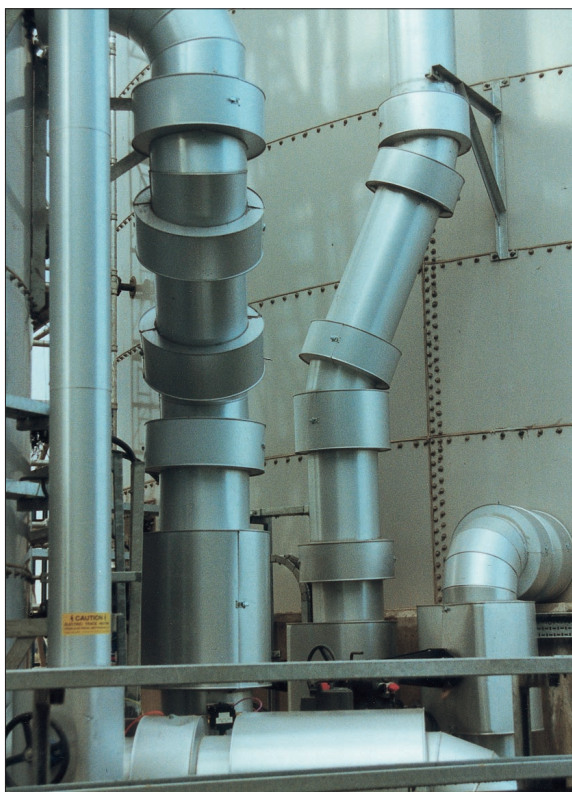


XIN/SC

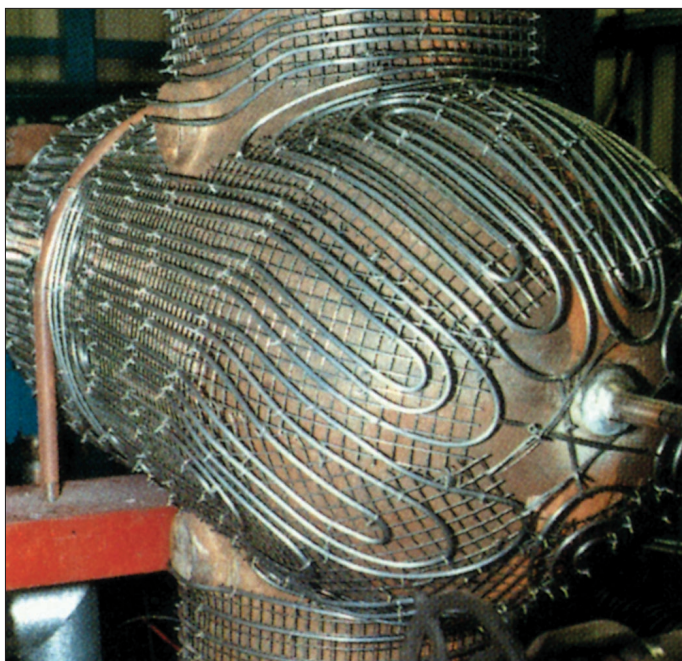
Inconel Sheathed Mineral Insulated Heating Cables, Corrosion Resistant for all Temperature Applications

Cross Inconel sheathed single conductor heating cable provides the highest level of corrosion resistance with high output capability.

For applications up to 600°C.



Trace Heating and Insulation in Corrosive Environment



450°C Heat Treatment Application

Applications up to 600°C

For surface temperatures over 600°C - 'Give Cross a call'



XIN/SC/10
10 Ohms/metre



XIN/SC/6.3
6.3 Ohms/metre



XIN/SC/4
4 Ohms/metre



XIN/SC/2.5
2.5 Ohms/metre



XIN/SC/1.6
1.6 Ohms/metre



XIN/SC/1.0
1.0 Ohms/metre



XIN/SC/0.63
0.63 Ohms/metre



XIN/SC/0.4
0.4 Ohms/metre



XIN/SC/0.25
0.25 Ohms/metre



XIN/SC/0.16
0.16 Ohms/metre



CROSS ELECTRICAL (NOTTINGHAM) LTD

Trace Works, Debdale Lane, Keyworth, Nottingham, NG12 5HN

Tel: +44 (0)115 937 5121 Fax: +44 (0)115 937 5116

E-mail: heat@cross-electrical.co.uk Website: www.cross-electrical.co.uk

